

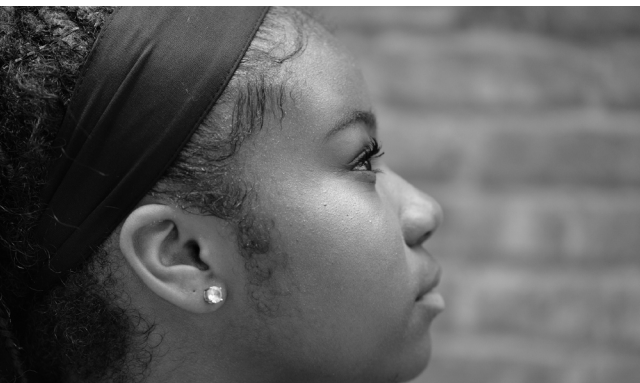
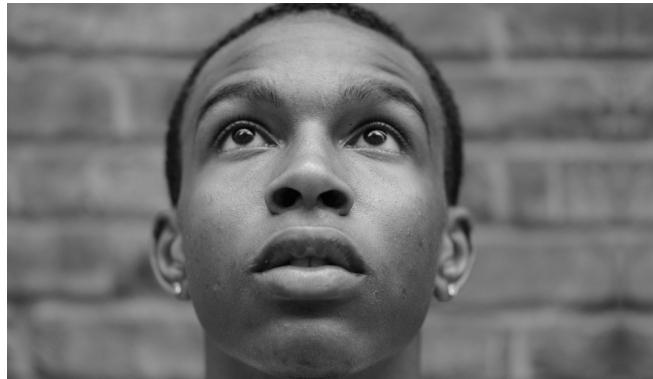


AMERICAN INSTITUTES FOR RESEARCH®

[air.org/careers](https://air.org/careers)

#AIRATAERA

# RESEARCH. EVALUATION. APPLICATION. **IMPACT.**



American Institutes for Research at the  
American Educational Research Association  
Annual Meeting (Virtual) | APRIL 8–12, 2021

AMERICAN INSTITUTES FOR RESEARCH® | [AIR.ORG](https://air.org)

Copyright © 2021 American Institutes for Research®. All Rights Reserved.



Established in 1946, the American Institutes for Research® (AIR®) is a nonpartisan, not-for-profit organization that conducts behavioral and social science research and delivers technical assistance both domestically and internationally in the areas of education, health and the workforce. AIR's work is driven by its mission to generate and use rigorous evidence that contributes to a better, more equitable world. With headquarters in Arlington, Virginia, AIR has offices across the U.S. and abroad. The AIR family of organizations includes IMPAQ, Maher & Maher, and Kimetrica. For more information, visit [air.org](https://air.org).

To learn more about career opportunities at AIR, visit [air.org/careers](https://air.org/careers).  
For general information, email [airinquiry@air.org](mailto:airinquiry@air.org).

## Meet Us Virtually at AERA

Nearly 60 experts are representing AIR during this year's annual AERA meeting, which is being held virtually. This booklet identifies the sessions during which AIR experts are presenting.

AIR is one of the world's largest behavioral and social science research and evaluation organizations. Our overriding goal is to use the best science available to bring the most effective ideas and approaches to enhancing everyday life. For us, making the world a better place is not wishful thinking. It is the goal that drives us.

We welcome you to attend one of the many sessions in which our staff are participating.

### ABOUT THIS BOOKLET

For your convenience, this booklet is organized in three sections:

- [Index of presentations by date and time](#)
- [Index of presentations by topic](#)
- [Index of professional development courses\\*](#)

AIR staff are listed alphabetically.

\*AERA is hosting professional development courses on April 13–16, after the annual meeting. See index for specific dates and times of courses involving AIR staff.

## Index of Presentations by Date and Time

---

### Thursday, April 8

Thursday, April 8

1:00 pm – 2:00 pm

**[The Potential of Evidence Gap Maps in Education Research: A Practical Application and Update From a Systematic Review of College Aid Programs](#)**

*Presenters/Authors* Megan Austin, Joshua Polanin

*Session* Advancing Methods for Meta-Analysis in Education Research

Thursday, April 8

2:00 pm – 3:00 pm

**[Special Education Reduces Odds of School Discipline Among Students With Disabilities](#)**

*Presenter/Author* Emma Cohen

*Session* Focus on Behavior: Interventions, Connections, and Outcomes

Thursday, April 8

3:00 pm – 4:00 pm

**[Language Use and Professional Development in Early Learning Programs Serving Dual Language Learners](#)**

*Presenters/Authors* Jennifer Anthony, Iliana Brodziak de los Reyes, Maryan Carbuccia-Abbott, Karen Manship, Heather Quick, Lisa Jean White

*Session* Professional Learning Approaches to Working With Young Children

Thursday, April 8

4:00 pm – 5:00 pm

**[The Relationship Between Information and Communication Technology Use and Student Resilience in PISA 2018](#)**

*Presenter/Author* Thanh Mai

*Session* Utilizing Large Databases to Explore Teacher and Student Well-Being

Thursday, April 8

5:00 pm – 6:00 pm

**[Historically Black Colleges and Universities as Resource to Advancing STEM Diversity](#)**

*Presenters/Authors* Jennifer Hudson, Mahlet Megra

*Session* Do You Really Care? Learning Environments That Shape Student Outcomes

## Friday, April 9

Friday, April 9  
10:40 am – 12:10 pm

### **Development of an Innovation Configuration Map for Culturally Responsive and Whole-School Restorative Practices**

*Presenter/Author* Sarah Caverly

*Session* Using Innovation Configuration Maps to Assess Extent of Implementation of Amorphous Initiatives and Innovation Bundles

### **What Works for Whom? Bias and Discrimination in Establishing an Equitable Evidence Base in Education Research**

*Presenters/Authors* Lisa Lachlan-Hache, Etai Mizrav

*Session* Measurement, Implementation, and Evaluation Across the K–12 Educator Pipeline

Friday, April 9  
12:20 pm – 1:20 pm

### **Spanish-English Kindergarten Students' Expressed Feelings, Coping Strategies, and Observable Interactions of Social and Behavioral Events**

*Presenter/Author* Alejandra Martin

*Session* Examination of Social Emotional Learning With Children

Friday, April 9  
4:10 pm – 5:10 pm

### **Effects of Attending a Deeper Learning Network High School on Civic Engagement and Workforce Outcomes**

*Presenter/Author* Elaine Yang

*Session* Deeper Learning in High Schools: Longer-Term Effects on Students' College, Civic Engagement, and Workforce Outcomes

### **Effects of Attending a Deeper Learning Network High School on College Experiences and Degree Attainment**

*Presenter/Author* Kristina Lillian Zeiser

*Session* Deeper Learning in High Schools: Longer-Term Effects on Students' College, Civic Engagement, and Workforce Outcomes

### **Examining Relationships Between Deeper Learning Opportunities and Competencies in High School and College Outcomes**

*Presenter/Author* Catherine Sousa Bitter

*Session* Deeper Learning in High Schools: Longer-Term Effects on Students' College, Civic Engagement, and Workforce Outcomes

### **Examining Relationships Between Deeper Learning Opportunities and Competencies in High School and Later Civic Engagement**

*Presenter/Author* George Atupem

*Session* Deeper Learning in High Schools: Longer-Term Effects on Students' College, Civic Engagement, and Workforce Outcomes

Friday, April 9  
6:15 pm – 8:15 pm

**Advanced Studies of National Databases: SIG Business Meeting**

*Chair* Amy Rathbun

---

Saturday, April 10

Saturday, April 10  
9:30 am – 10:30 am

**College Enrollment Benchmarks for the Grade 12 NAEP Mathematics Assessment**

*Presenters/Authors* George Bohmstedt, Markus Broer, Burhan Ogut

*Session* Correlations Between NAEP Achievement and Other Outcomes

**Declining Reading Culture? Analysis of NAEP 2017–2019 Results on Reading Habits and Attitudes**

*Presenters/Authors* Yifan Bai, Samuel Correa, Martin Hooper

*Session* Correlations Between NAEP Achievement and Other Outcomes

Saturday, April 10  
2:30 pm – 4:00 pm

**Fireside Chat. Stories of Collaboration, Justice, and Joy: Using the Academy to Advance Community Desires**

*Chair* Sarah Mae Olivar

Saturday, April 10  
4:10 pm – 5:40 pm

**Feedback for Teaching Candidates From Mentor Teachers and University Supervisors**

*Presenters/Authors* James Cowan, Dan Goldhaber

*Session* Preservice Courses, Student Teaching Experiences, and Beginning Teacher Outcomes

**Measures, Data, and Counterfactuals: Approaches to Improving Research in Career and Technical Education**

*Chair* Katherine Hughes

**Understanding the Digital Skills of Adults and How to Improve Them**

*Chair* Jaleh Soroui

*Discussant* Bitnara Jasmine Park

**Who Has Digital Literacy Skills?**

*Presenter/Author* Emily Pawlowski

*Session* Understanding the Digital Skills of Adults and How to Improve Them

---

## Sunday, April 11

Sunday, April 11  
10:40 am – 11:40 am

### **Replicating an Intervention Designed to Mitigate Academic and Social Adversity for Transitioning Middle School Students**

*Presenters/Authors* Trisha Borman, Scott Houghton, Alejandra Martin, So Jung Park, Bo Zhu

*Session* Motivation, Reading, and Writing

Sunday, April 11  
10:40 am – 12:10 pm

### **Characteristics of High-Performing Students Who Are Eligible for the National School Lunch Program**

*Presenter/Author* Sakiko Ikoma

*Session* Investigating Academic Resilience Using Data From the 2017 NAEP

### **Examining the School Characteristics of Different National School Lunch Program-Eligible Schools**

*Presenter/Author* Juanita Hicks

*Session* Investigating Academic Resilience Using Data From the 2017 NAEP

### **Investigating Academic Resilience Using Data From the 2017 NAEP**

*Chair* Markus Broer

### **State Comparison of High-Achieving Students in High-Poverty Schools**

*Presenter/Author* Alison Filbey

*Session* Investigating Academic Resilience Using Data From the 2017 NAEP

Sunday, April 11  
2:30 pm – 4:00 pm

### **Designing and Measuring Improvement Science Leadership Proficiency**

*Presenter/Author* Sarah Mae Olivar

*Session* Evaluating and Developing Effective School Leaders

### **Evidence Syntheses of Cognitive, Social, and Behavioral Processes and Practices Across Learning Contexts**

*Chair* Joshua Polanin

Sunday, April 11  
6:15 pm – 8:15 pm

### **Systematic Review and Meta-Analysis: SIG Business Meeting**

*Participant* Joshua Polanin

Monday, April 12

Monday, April 12  
9:30 am – 11:00 am

**Final Results of the National Randomized Trial of Descubriendo la Lectura: Impacts, Implementation, and Costs**

*Chair* Patricia Garcia-Arena

**Implementation Fidelity of Descubriendo La Lectura: An Examination of Program Infrastructure and Instructional Delivery**

*Presenters/Authors* Trisha Borman, Scott Houghton, Alejandra Martin, Bo Zhu

*Session* Final Results of the National Randomized Trial of Descubriendo la Lectura: Impacts, Implementation, and Costs

**Implementing an Intensive Tutoring Program for Spanish-Speaking English Learners: How Cost Effective Is Descubriendo La Lectura?**

*Presenters/Authors* Ethan Adelman-Sil, Trisha Borman, Maryan Carbuccia-Abbott, Iliana Brodziak de los Reyes, Scott Houghton, Alejandra Martin, Bo Zhu

*Session* Final Results of the National Randomized Trial of Descubriendo la Lectura: Impacts, Implementation, and Costs

**The Spanish- and English-Language Literacy Impacts of Descubriendo La Lectura Across Three Cohorts**

*Presenters/Authors* Trisha Borman, Scott Houghton, Alejandra Martin, So Jung Park, Bo Zhu

*Session* Final Results of the National Randomized Trial of Descubriendo la Lectura: Impacts, Implementation, and Costs

Monday, April 12  
11:10 am – 12:10 pm

**Impact of High School Coursework on Postsecondary Enrollment**

*Presenters/Authors* Devin Dizdari, Burhan Ogut, Charles Scott, Darrick Yee

*Session* Quantitative Methods and College Access

Monday, April 12  
11:10 am – 12:40 pm

**An Online Learning Approach to High School Credit Recovery: Initial Outcomes and Implementation Costs**

*Presenters/Authors* Drew Atchison, Iliana Brodziak de los Reyes, Peggy Clements, Jessica Heppen, Jordan Rickles

*Session* Equity, Implementation, and Outcomes in Online Instruction for Credit Recovery in High Schools



Monday, April 12  
11:10 am – 12:40 pm

**Perseverance, Self-Discipline, Confidence in Reading, and Their Relationships With Middle School Students’ Reading Performance**

*Presenters/Authors* Juliet Holmes, Grace Ji, Bitnara Jasmine Park  
*Session* Using NAEP Data to Investigate Affective Factors in Middle School Students’ Academic Achievement

**(Re)Considering How States and Districts Allocate Funding for Students With Disabilities**

*Presenter/Author* Jesse Levin  
*Session* (Re)Considering Special Education Resources, Funding, and Outcomes: Setting an Agenda for Research and Policy

**(Re)Considering Special Education Resources, Funding, and Outcomes: Setting an Agenda for Research and Policy**

*Discussant* Jenifer Harr-Robins

**Relationship Between Students’ Affective and Mathematics Motivation Factors and Mathematics Achievement**

*Presenters/Authors* Samuel Correa, Grace Ji, Bitnara Jasmine Park  
*Session* Using NAEP Data to Investigate Affective Factors in Middle School Students’ Academic Achievement

**Using Cost Function Analysis in Studies of Special Education Costs**

*Presenter/Author* Jesse Levin  
*Session* (Re)Considering Special Education Resources, Funding, and Outcomes: Setting an Agenda for Research and Policy

Monday, April 12  
2:50 pm – 3:50 pm

**The Toolbox Reconstructed: High School Curriculum Intensity and Postsecondary Outcomes**

*Presenters/Authors* Devin Dizdari, Burhan Ogut, Darrick Yee  
*Session* Intense Challenges and Opportunities in Curriculum Policy

Monday, April 12  
2:50 pm – 4:20 pm

**Building Networked Improvement Community Capabilities Through Analytic Partnership**

*Presenter/Author* Jill Bowdon  
*Session* Understanding and Supporting Collaborative Research: Frameworks and Measures to Support Learning for Research and Practice

## Index of Presentations by Topic

---

### Administration

#### Leadership Preparation Development

Sunday, April 11  
2:30 pm – 4:00 pm

**Designing and Measuring Improvement Science Leadership Proficiency**

*Presenter/Author* Sarah Mae Olivar

*Session* Evaluating and Developing Effective School Leaders

---

### Adult Literacy and Adult Education

Saturday, April 10  
4:10 pm – 5:40 pm

**Understanding the Digital Skills of Adults and How to Improve Them**

*Chair* Jaleh Soroui

*Discussant* Bitnara Jasmine Park

Saturday, April 10  
4:10 pm – 5:40 pm

**Who Has Digital Literacy Skills?**

*Presenter/Author* Emily Pawlowski

*Session* Understanding the Digital Skills of Adults and How to Improve Them

---

### Advanced Studies of National Databases

Thursday, April 8  
4:00 pm – 5:00 pm

**The Relationship Between Information and Communication Technology Use and Student Resilience in PISA 2018**

*Presenter/Author* Thanh Mai

*Session* Utilizing Large Databases to Explore Teacher and Student Well-Being

Friday, April 9  
6:15 pm – 8:15 pm

**Advanced Studies of National Databases: SIG Business Meeting**

*Chair* Amy Rathbun

---

### Career and Technical Education

Saturday, April 10  
4:10 pm – 5:40 pm

**Measures, Data, and Counterfactuals: Approaches to Improving Research in Career and Technical Education**

*Chair* Katherine Hughes

---

## Early Education and Child Development

Thursday, April 8  
3:00 pm – 4:00 pm

### **Language Use and Professional Development in Early Learning Programs Serving Dual Language Learners**

*Presenters/Authors* Jennifer Anthony, Iliana Brodziak de los Reyes, Maryan Carbuccia-Abbott, Karen Manship, Heather Quick, Lisa Jean White

*Session* Professional Learning Approaches to Working With Young Children

---

## Education Policies and Politics

### Curriculum and Instruction

Monday, April 12  
2:50 pm – 3:50 pm

### **The Toolbox Reconstructed: High School Curriculum Intensity and Postsecondary Outcomes**

*Presenters/Authors* Devin Dizdari, Burhan Ogut, Darrick Yee

*Session* Intense Challenges and Opportunities in Curriculum Policy

### Human Capital and School Finance

Saturday, April 10  
4:10 pm – 5:40 pm

### **Feedback for Teaching Candidates From Mentor Teachers and University Supervisors**

*Presenters/Authors* James Cowan, Dan Goldhaber

*Session* Preservice Courses, Student Teaching Experiences, and Beginning Teacher Outcomes

---

## Fiscal Issues, Policy, and Education Finance

Monday, April 12  
11:10 am – 12:40 pm

### **(Re)Considering How States and Districts Allocate Funding for Students With Disabilities**

*Presenter/Author* Jesse Levin

*Session* (Re)Considering Special Education Resources, Funding, and Outcomes: Setting an Agenda for Research and Policy

Monday, April 12  
11:10 am – 12:40 pm

### **(Re)Considering Special Education Resources, Funding, and Outcomes: Setting an Agenda for Research and Policy**

*Discussant* Jenifer Harr-Robins

Monday, April 12  
11:10 am – 12:40 pm

**Using Cost Function Analysis in Studies of Special Education Costs**

*Presenter/Author* Jesse Levin

*Session* (Re)Considering Special Education Resources, Funding, and Outcomes: Setting an Agenda for Research and Policy

---

## Learning and Instruction

### Cognitive and Motivational Processes

Sunday, April 11  
10:40 am – 11:40 am

**Replicating an Intervention Designed to Mitigate Academic and Social Adversity for Transitioning Middle School Students**

*Presenters/Authors* Trisha Borman, Scott Houghton, Alejandra Martin, So Jung Park, Bo Zhu

*Session* Motivation, Reading, and Writing

### Technology-Based Environments

Monday, April 12  
11:10 am – 12:40 pm

**An Online Learning Approach to High School Credit Recovery: Initial Outcomes and Implementation Costs**

*Presenters/Authors* Drew Atchison, Iliana Brodziak de los Reyes, Peggy Clements, Jessica Heppen, Jordan Rickles

*Session* Equity, Implementation, and Outcomes in Online Instruction for Credit Recovery in High Schools

---

## Middle-Level Education Research

Monday, April 12  
11:10 am – 12:40 pm

**Perseverance, Self-Discipline, Confidence in Reading, and Their Relationships With Middle School Students' Reading Performance**

*Presenters/Authors* Juliet Holmes, Grace Ji, Bitnara Jasmine Park

*Session* Using NAEP Data to Investigate Affective Factors in Middle School Students' Academic Achievement

Monday, April 12  
11:10 am – 12:40 pm

**Relationship Between Students' Affective and Mathematics Motivation Factors and Mathematics Achievement**

*Presenters/Authors* Samuel Correa, Grace Ji, Bitnara Jasmine Park

*Session* Using NAEP Data to Investigate Affective Factors in Middle School Students' Academic Achievement

---

## NAEP Studies

Saturday, April 10  
9:30 am – 10:30 am

### **College Enrollment Benchmarks for the Grade 12 NAEP Mathematics Assessment**

*Presenters/Authors* George Bohrnstedt, Markus Broer, Burhan Ogut  
*Session* Correlations Between NAEP Achievement and Other Outcomes

Saturday, April 10  
9:30 am – 10:30 am

### **Declining Reading Culture? Analysis of NAEP 2017–2019 Results on Reading Habits and Attitudes**

*Presenters/Authors* Yifan Bai, Samuel Correa, Martin Hooper  
*Session* Correlations Between NAEP Achievement and Other Outcomes

Sunday, April 11  
10:40 am – 12:10 pm

### **Characteristics of High-Performing Students Who Are Eligible for the National School Lunch Program**

*Presenter/Author* Sakiko Ikoma  
*Session* Investigating Academic Resilience Using Data From the 2017 NAEP

Sunday, April 11  
10:40 am – 12:10 pm

### **Examining the School Characteristics of Different National School Lunch Program-Eligible Schools**

*Presenter/Author* Juanita Hicks  
*Session* Investigating Academic Resilience Using Data From the 2017 NAEP

Sunday, April 11  
10:40 am – 12:10 pm

### **Investigating Academic Resilience Using Data From the 2017 NAEP**

*Chair* Markus Broer

Sunday, April 11  
10:40 am – 12:10 pm

### **State Comparison of High-Achieving Students in High-Poverty Schools**

*Presenter/Author* Alison Filbey  
*Session* Investigating Academic Resilience Using Data From the 2017 NAEP

---

## Postsecondary Education

### College Student Access

Monday, April 12  
11:10 am – 12:10 pm

### **Impact of High School Coursework on Postsecondary Enrollment**

*Presenters/Authors* Devin Dizdari, Burhan Ogut, Charles Scott, Darrick Yee  
*Session* Quantitative Methods and College Access

## Research, Evaluation, and Assessment in Schools

### Applied Research in Schools

Friday, April 9  
10:40 am – 12:10 pm

**Development of an Innovation Configuration Map for Culturally Responsive and Whole-School Restorative Practices**

*Presenter/Author* Sarah Caverly

*Session* Using Innovation Configuration Maps to Assess Extent of Implementation of Amorphous Initiatives and Innovation Bundles

Friday, April 9  
4:10 pm – 5:10 pm

**Effects of Attending a Deeper Learning Network High School on Civic Engagement and Workforce Outcomes**

*Presenter/Author* Elaine Yang

*Session* Deeper Learning in High Schools: Longer-Term Effects on Students' College, Civic Engagement, and Workforce Outcomes

Friday, April 9  
4:10 pm – 5:10 pm

**Effects of Attending a Deeper Learning Network High School on College Experiences and Degree Attainment**

*Presenter/Author* Kristina Lillian Zeiser

*Session* Deeper Learning in High Schools: Longer-Term Effects on Students' College, Civic Engagement, and Workforce Outcomes

Friday, April 9  
4:10 pm – 5:10 pm

**Examining Relationships Between Deeper Learning Opportunities and Competencies in High School and College Outcomes**

*Presenter/Author* Catherine Sousa Bitter

*Session* Deeper Learning in High Schools: Longer-Term Effects on Students' College, Civic Engagement, and Workforce Outcomes

Friday, April 9  
4:10 pm – 5:10 pm

**Examining Relationships Between Deeper Learning Opportunities and Competencies in High School and Later Civic Engagement**

*Presenter/Author* George Atupem

*Session* Deeper Learning in High Schools: Longer-Term Effects on Students' College, Civic Engagement, and Workforce Outcomes

Monday, April 12  
2:50 pm – 4:20 pm

**Building Networked Improvement Community Capabilities Through Analytic Partnership**

*Presenter/Author* Jill Bowdon

*Session* Understanding and Supporting Collaborative Research: Frameworks and Measures to Support Learning for Research and Practice

## Program Evaluation in Schools

Friday, April 9  
10:40 am – 12:10 pm

### **What Works for Whom? Bias and Discrimination in Establishing an Equitable Evidence Base in Education Research**

*Presenters/Authors* Lisa Lachlan-Hache, Etai Mizrav

*Session* Measurement, Implementation, and Evaluation Across the K–12 Educator Pipeline

Monday, April 12  
9:30 am – 11:00 am

### **Final Results of the National Randomized Trial of Descubriendo la Lectura: Impacts, Implementation, and Costs**

*Chair* Patricia Garcia-Arena

Monday, April 12  
9:30 am – 11:00 am

### **Implementation Fidelity of Descubriendo La Lectura: An Examination of Program Infrastructure and Instructional Delivery**

*Presenters/Authors* Trisha Borman, Scott Houghton, Alejandra Martin, Bo Zhu

*Session* Final Results of the National Randomized Trial of Descubriendo la Lectura: Impacts, Implementation, and Costs

Monday, April 12  
9:30 am – 11:00 am

### **Implementing an Intensive Tutoring Program for Spanish-Speaking English Learners: How Cost Effective Is Descubriendo La Lectura?**

*Presenters/Authors* Ethan Adelman-Sil, Trisha Borman, Maryan Carbuccia-Abbott, Iliana Brodziaik de los Reyes, Scott Houghton, Alejandra Martin, Bo Zhu

*Session* Final Results of the National Randomized Trial of Descubriendo la Lectura: Impacts, Implementation, and Costs

Monday, April 12  
9:30 am – 11:00 am

### **The Spanish- and English-Language Literacy Impacts of Descubriendo La Lectura Across Three Cohorts**

*Presenters/Authors* Trisha Borman, Scott Houghton, Alejandra Martin, So Jung Park, Bo Zhu

*Session* Final Results of the National Randomized Trial of Descubriendo la Lectura: Impacts, Implementation, and Costs

## Research Focus on Black Education

Thursday, April 8  
5:00 pm – 6:00 pm

### **Historically Black Colleges and Universities as Resource to Advancing STEM Diversity**

*Presenters/Authors* Jennifer Hudson, Mahlet Megra

*Session* Do You Really Care? Learning Environments That Shape Student Outcomes

---

## Social and Emotional Learning

Friday, April 9  
12:20 pm – 1:20 pm

**Spanish-English Kindergarten Students' Expressed Feelings, Coping Strategies, and Observable Interactions of Social and Behavioral Events**

*Presenter/Author* Alejandra Martin

*Session* Examination of Social Emotional Learning With Children

---

## Social Context of Education

Graduate Student Council

Saturday, April 10  
2:30 pm – 4:00 pm

**Fireside Chat. Stories of Collaboration, Justice, and Joy: Using the Academy to Advance Community Desires**

*Chair* Sarah Mae Olivar

---

## Special and Inclusive Education Research

Thursday, April 8  
2:00 pm – 3:00 pm

**Special Education Reduces Odds of School Discipline Among Students With Disabilities**

*Presenter/Author* Emma Cohen

*Session* Focus on Behavior: Interventions, Connections, and Outcomes

---

## Systematic Review and Meta-Analysis

Thursday, April 8  
1:00 pm – 2:00 pm

**The Potential of Evidence Gap Maps in Education Research: A Practical Application and Update From a Systematic Review of College Aid Programs**

*Presenters/Authors* Megan Austin, Joshua Polanin

*Session* Advancing Methods for Meta-Analysis in Education Research

Sunday, April 11  
2:30 pm – 4:00 pm

**Evidence Syntheses of Cognitive, Social, and Behavioral Processes and Practices Across Learning Contexts**

*Chair* Joshua Polanin

Sunday, April 11  
6:15 pm – 8:15 pm

**Systematic Review and Meta-Analysis: SIG Business Meeting**

*Participant* Joshua Polanin



## Index of Professional Development Courses\*

---

### Wednesday, April 14

Wednesday, April 14     **[Advanced Meta-Analysis](#)**  
1:00 pm – 5:00 pm     *Instructor*     Ryan Williams

---

### Thursday, April 15

Thursday, April 15     **[Multilevel Modeling With International Large-Scale Assessment Databases Using the HLM Software Program](#)**  
1:00 pm – 5:00 pm     *Instructors*     Sakiko Ikoma, Bitnara Jasmine Park, Amy Rathbun,  
Yuan Zhang

\* Professional development courses are conducted after the annual meeting.  
Please visit the [AERA website for information about registration and fees.](#)



AMERICAN INSTITUTES FOR RESEARCH®

1400 Crystal Drive, 10th Floor  
Arlington, VA 22202-3289

202.403.5000 | [air.org](http://air.org)